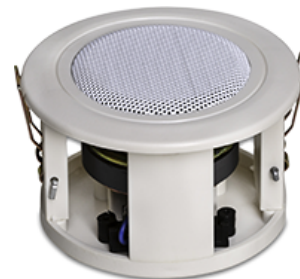


MI 02

GENERAL DESCRIPTION

CSC MI 02 is a tiny ceiling speaker with a 2" LF full range driver to provide that extra clarity. This full range ceiling speaker is designed to provide clear vocal reinforcement and is perfect for situations where communication is more important than music. Featuring a powerful 2" (50 mm) transducer, it has a superb off-axis uniform coverage which blends with seamless intelligibility. Excellent for voice applications, MI 02 is capable of delivering clear vocals. It can be safely used in bathrooms, kitchens, saunas and even under outdoor eaves. Installation of MI 02 is easy - cut a hole, feed the wires and simply drop the speaker in.



FEATURES

- ✓ Compact, high performance ceiling speaker
- ✓ High power 6 Watt - maximum SPL 98 dB
- ✓ Frequency response from 200 Hz to 12 kHz
- ✓ Brilliant vocal propagation
- ✓ Very smooth off-axis response - usable out to 100° (-6 dB)
- ✓ Fast, integral hardware

SYSTEM APPLICATIONS

- ✓ Distributed audio/public address system
- ✓ Commercial and retail
- ✓ Recommended for the use in Hotels, shopping malls, schools, hospitals and conference rooms

SYSTEM SPECIFICATIONS

Power handling	6 watt
Frequency Response	200 Hz-12 kHz \pm 3 dB
Drivers	LF: 1 x 2" (25 mm) LF full range
Sensitivity (1 Watt/1 meter)	91 dB
Maximum SPL	98 dB
Nominal Impedance	Selectable 8 Ohms or 70/100V linet
Dispersion	100° from central axis
Enclosure	Plastic/Aluminum
Protective Grille	Powder coated steel mesh
Standard Colours	White
Fittings	Mounting hole diameter
Rated Continuous Power AES	Selectable 2/4/6 Watt

Mid highs measured on axis in full space @ 1 watt/1 meter using band limited pink noise. In the en-deavour to continuously improve the product with design refinements introduced into existing products. Any current CSC product may differ in some respect from its published description. However this will always equal or exceed the original design specifications. Every CSC product is built to the highest standards and tested to ensure that it meets the performance criteria specified.

SAFETY INSTRUCTIONS

- ÿ Ensure that there is enough clear space in the false ceiling to house the speaker. Draw a circle and cut a hole and drop in the ceiling speaker.
- ÿ Remove the grill from the speaker by gently pushing the mounting poles down until they ease the grill out, position the rear of the speaker facing into the hole.
- ÿ Connect speaker to the system while ensuring that all connections are correct. Connect the power to mains and signal to the audio input.
- ÿ Turn the fixing points until the ends are located over the ceiling, tighten the screw until the speaker is clamped on to the ceiling.
- ÿ Replace the speaker grill.
- ÿ Turn on the music source and enjoy the amazing sound of the CSC loudspeaker.